

Flygt 3068

3068.175

Table of Contents

1	Introduction.....	2
1.1	Specially approved products.....	2
2	Product Description.....	3
2.1	The data plate.....	3
2.2	Product denomination.....	3
3	Exploded View.....	5
3.1	Drive unit.....	5
3.2	M_ HT.....	6
4	List of Parts.....	7
4.1	3068.175.....	7

1 Introduction

Purpose of this manual

The purpose of this manual is to provide necessary information on spare parts and accessories order.

Disclaimer

Always use genuine Flygt parts. The use of other spare parts or accessories can invalidate any claims for warranty or compensation. Xylem does not take any responsibility for damages that are caused by the use of non-original parts. For more information, contact your local sales and service representative.

Data for ordering spare parts

The following information is needed for spare part orders:

- Serial number of the product
- Part number
- Quantity of bulk material, see * in tables

1.1 Specially approved products

Qualification of personnel

Only Xylem or Xylem-authorized service personnel may undertake repair work on specially approved products.

Dimensional accuracy inspection

Spare parts marked with (Ex) after the part number are subject to dimensional accuracy inspection when used in specially approved products.

2 Product Description

Products included

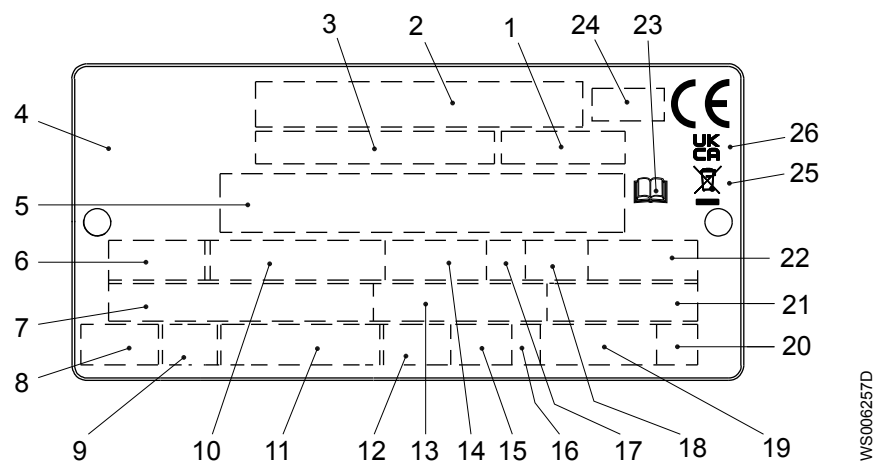
Type	Non-explosion proof version	Explosion proof version
Grinder	3068.175	-

Pump-specific information

For the specific weight, current, voltage, power ratings, and speed of the pump, see the data plate of the pump.

2.1 The data plate

The data plate is a metal label that is located on the main body of the products. The data plate lists key product specifications. Specially approved products also have an approval plate.



1. Curve code or Propeller code
2. Serial number
3. Product number
4. Country of origin
5. Additional information
6. Phase; type of current; frequency
7. Rated voltage
8. Thermal protection
9. Thermal class
10. Rated shaft power
11. International standard
12. Degree of protection
13. Rated current
14. Rated speed
15. Maximum submergence
16. Direction of rotation: L=left, R=right
17. Duty class
18. Duty factor
19. Product weight
20. Locked rotor code letter
21. Power factor
22. Maximum ambient temperature
23. Read installation manual
24. Notified body, only for EN-approved Ex products
25. WEEE-Directive symbol
26. UKCA marking

Figure 1: The data plate

2.2 Product denomination

Reading instruction

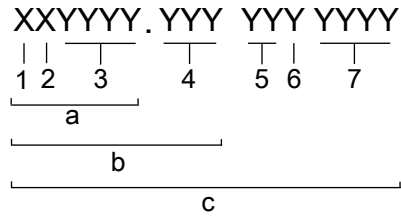
In this section, code characters are illustrated accordingly:

X = letter

Y = digit

The different types of codes are marked up with a, b and c. Code parameters are marked up with numbers.

Codes and parameters



WS006265B

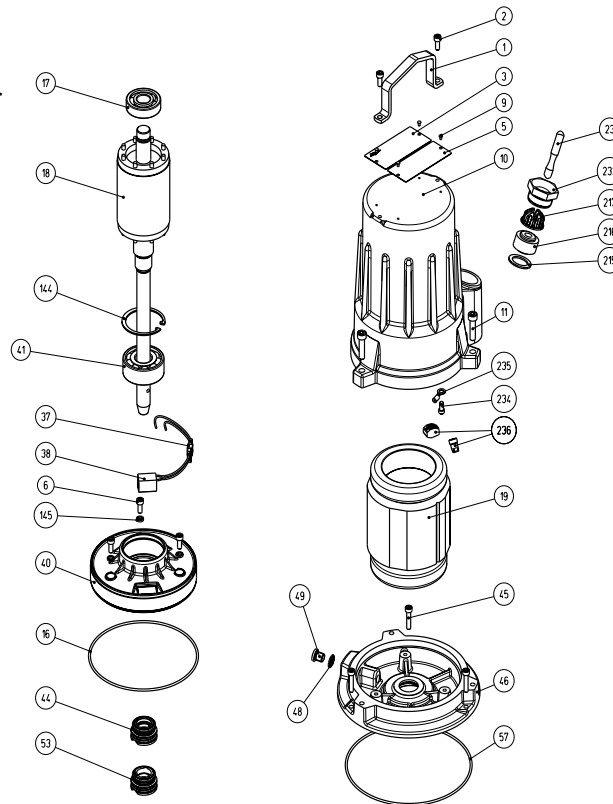
Type of Callout	Number	Indication
Type of code	a	Sales denomination
	b	Product code
	c	Serial number
Parameter	1	Hydraulic end
	2	Type of installation
	3	Sales code
	4	Version
	5	Production year
	6	Production cycle
	7	Running number

3 Exploded View

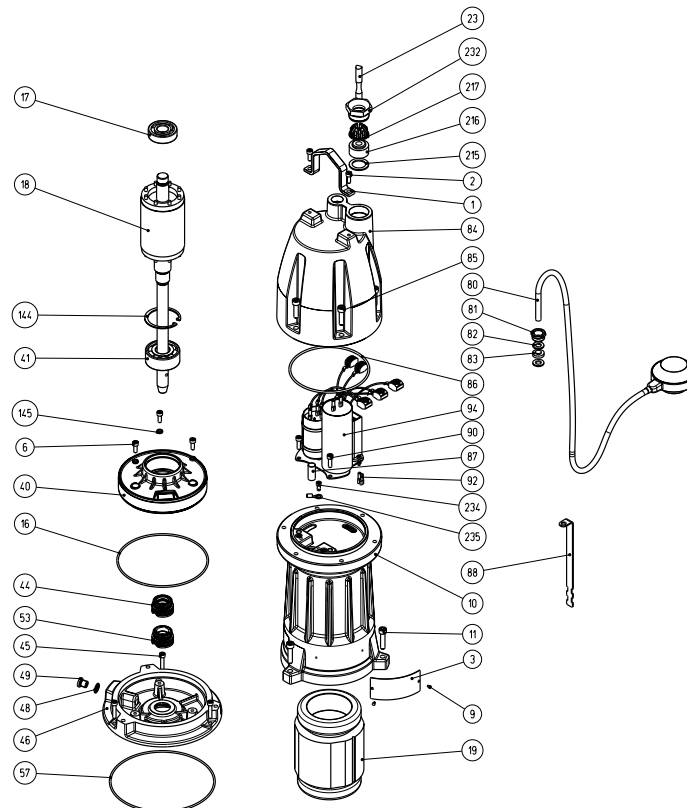
3.1 Drive unit

3068.175

Without built-in 1-phase starter



With built-in 1-phase starter

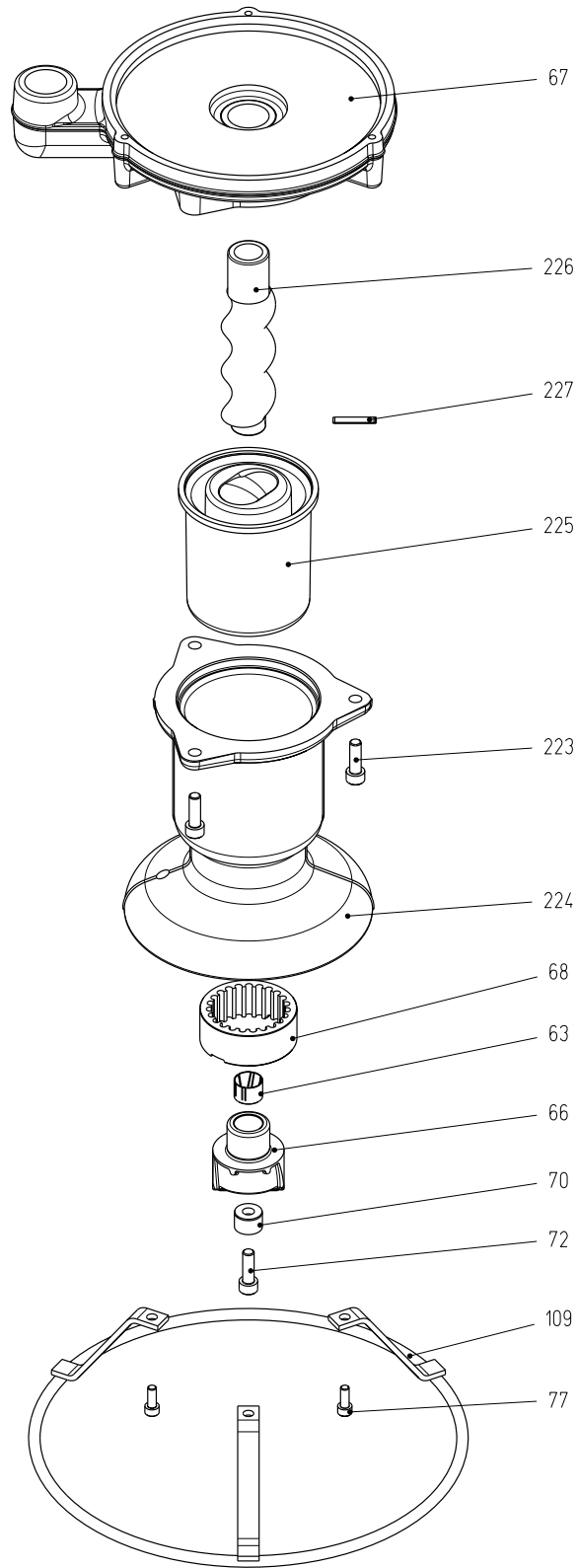


31274C

3.2 M_HT

F installation

3068.175



31275C

4 List of Parts

4.1 3068.175

Pos. No	Part. No	Type	Denomination	Qty/Version
				175
1	555 61 01	(Ex)	Lifting handle V2A	1
1	820 76 00		Lifting handle	1
2	82 00 13		Hex.socket hd screw M6X16-A2-70	2
3	630 68 00	(Ex)	Data plate USE 6306801 AS SPARE PART	2
5	543 42 00		Instruction plate CANADA	1
5	594 43 00		Instruction plate	2
5	761 78 00		Name plate	1
6	82 00 13		Hex.socket hd screw M6X16-A2-70	3
9	82 20 88		Drive screw 4X5-A2/A4	4
9	82 20 88		Drive screw 4X5-A2/A4	2
10	722 53 00		Stator housing	1
10	820 75 00		Stator housing	1
11	83 04 45		Hex.socket hd screw M8X35-A4-80	3
15	427 13 00		Marking tape	1
15	772 17 00		Connection plate	1
15	772 17 07		Connection plate	1
16	82 78 26		O-ring 156X3 NBR	1
17	83 33 13		Ball bearing 20X52X15 MM	1
18	706 73 00		Shaft unit	3-phase
18	706 73 01		Shaft unit	1-phase
19	657 86 15	(Ex)	Stator 13-08-4b	3-phase 50 Hz 4-poles 400V-415V Y P2=0,90kW
19	657 86 01	(Ex)	Stator 13-08-4b	3-phase 60 Hz 4-poles 460V-480V Y P2=1,30kW/1,70hp
19	657 86 02	(Ex)	Stator 13-08-4b	3-phase 50 Hz 4-poles 400V-415V Y 230V D P2=0,90kW
19	657 86 03	(Ex)	Stator 13-08-4b	3-phase 50 Hz 4-poles 440V Y P2=0,90kW
19	657 86 04	(Ex)	Stator 13-08-4b	3-phase 50 Hz 4-poles 500V Y P2=0,90kW
19	657 86 05	(Ex)	Stator 13-08-4b	3-phase 60 Hz 4-poles 575V-600V Y P2=1,30kW/1,70hp
19	657 86 04	(Ex)	Stator 13-08-4b	3-phase 50 Hz 4-poles 690V Y 400V D P2=0,90kW
19	657 86 05	(Ex)	Stator 13-08-4b	3-phase 50 Hz 4-poles 200V Y P2=0,90kW

Pos. No	Part. No	Type	Denomination	Qty/Version	
				175	
19	657 86 06	(Ex)	Stator 13-08-4b	3-phase 60 Hz 4-poles 220V-230V D 380V Y P2=1,30kW/1,70hp	1
19	657 86 07	(Ex)	Stator 13-08-4b	3-phase 60 Hz 4-poles 200V-208V Y P2=1,30kW/1,70hp	1
19	657 86 08	(Ex)	Stator 13-08-4b	3-phase 60 Hz 4-poles 400V Y P2=1,30kW/1,70hp	1
19	657 86 09	(Ex)	Stator 13-08-4b	3-phase 50 Hz 4-poles 380V Y 220V D P2=0,90kW	1
19	657 86 10	(Ex)	Stator 13-08-4b	3-phase 50 Hz 4-poles 550V Y P2=0,90kW	1
19	657 86 12	(Ex)	Stator 13-08-4b	3-phase 60 Hz 4-poles 460V YSER 230V-240V Y// P2=1,30kW/1,70hp	1
19	656 12 01	(Ex)	Stator 13-10-4b 1phs	3-phase 60 Hz 4-poles 460V YSER 230V Y// P2=1,30kW/ 1,70hp 1-phase 50 Hz 4-poles 220V-240V Rated power 0,90kW Built in 1-phase starter with level switch *** Only for Special Order *** 1-phase 50 Hz 4-poles 220V-240V P2=0,90kW 1-phase 50 Hz 4-poles 220V-240V Rated power 0,90kW Built in 1-phase starter without level switch *** Only for Special Order ***	1
19	656 12 03	(Ex)	Stator 13-10-4b 1phs	1-phase 60 Hz 4-poles 230V-240V P2=1,30kW/1,70hp	1
23	94 19 89		Motor cable subcab S3X1.5+3X1.5/3+S(2X0.5)		*
23	94 19 89		Motor cable subcab S3X1.5+3X1.5/3+S(2X0.5)		3
23	788 77 00		Motor cable unit	SUBCAB 4G1,5+2x1,5 16 - 17mm L= 4,50m	1
23	94 20 41		Motor cable subcab 4G1.5		*
23	94 20 61		Motor cable subcab 4G1.5+2X1.5		*
23	788 77 03		Motor cable unit	SUBCAB 4G1,5+2x1,5 16 - 17mm L= 15m	1
23	790 35 03		Motor cable unit	SUBCAB 4G1,5+2x1,5 16 - 17mm L= 15m	1
23	94 20 42		Motor cable subcab 4G2.5		*
23	94 20 59		Motor cable subcab 4G2.5+2X1.5		*
23	94 20 40		Motor cable subcab 3G1.5		*
37	504 78 07		Cable unit		1
38	518 89 02	(Ex)	Leakage sensor (FLS)		1
40	645 57 00		Bearing holder GG-20		1

Pos. No	Part. No	Type	Denomination	Qty/Version
				175
41	83 30 15		Ball bearing 25X62X25.4	1
44	720 45 07		Mechanical seal AL2O3/ CARBON FPM	1
45	82 00 22		Hex.socket hd screw	3
46	539 94 05		Oil housing bottom FOR STANDARD SEAL	1
48	85 02 73		Seal washer	1
49	85 02 64		Plug	1
53	720 45 01		Mechanical seal AL2O3/WCCR FPM	1
53	720 45 00		Mechanical seal WCCR/WCCR FPM	1
57	82 78 41		O-ring 183.5X3 NBR	1
63	397 88 02		Sleeve	1
66	464 05 01		Cutting wheel	1
67	703 04 04		Pump housing	ISO G1 Outlet :Vertical Installation: F
67	703 04 05		Pump housing	1-11 1/2 NPT Outlet :Vertical Installation: F H
68	479 71 00		Cutting ring	1
70	444 82 00		Sleeve	1
72	83 02 01		Hex.socket hd screw M8X25- A4-80	1
77	82 00 13		Hex.socket hd screw M6X16- A2-70	3
80	83 54 31		Level switch	1
81	220 25 02		Gland screw Pr 22.5	1
82	82 35 76		Plain washer 10.5X20X2- A4-170HV	1
83	275 80 02		Ring	1
84	820 74 01		Entrance cover	Built in 1-phase starter with level switch *** Only for Special Order ***
84	820 74 00		Entrance cover	Built in 1-phase starter without level switch *** Only for Special Order ***
85	82 00 35		Hex.socket hd screw M8X30- A2-70	6
86	82 95 80		O-ring 139.3X3.53 FPM	1
87	94 05 86		Insulating hose D=12 MM	*
88	823 33 00		Holder	1
89	83 44 24		Closed-end splice 3-6 (AWG 12-10)	3
90	82 00 15		Hex.socket hd screw M6X20- A2-70	2
92	83 43 46		Flat pin sleeve 1.0-2.6MM2	2
93	83 42 65		Terminal block 600V/20A UL	1
94	822 65 00		Starter unit	1

Pos. No	Part. No	Type	Denomination	Qty/Version
				175
109	703 06 00		Stand	1
134	554 30 02		Starter START 351-400-B-516-4	1
134	554 30 03		Starter START 351-400-B-516-6.3	1
134	554 30 12		Starter START 351-400-B-532-4	1
134	554 30 13		Starter START 351-400-B-532-6.3	1
134	554 23 39		Starter 156. 1.3 KW 230/50 HZ	1
134	554 23 38		Starter 156. 1.5 KW 230/60 HZ	1
144	82 62 12		Retaining ring SGH 62	1
145	82 50 60		Sealing washer DUBO NR 301	3
162	94 03 33		Shrink hose ID=3.2 MM	*
169	667 40 00		Sticker	2
215	82 40 61		Plain washer 24.5X35X2-A2-70	1
216	84 37 95		Seal sleeve (10)-12 MM NBR	1
216	84 17 91		Seal sleeve (12)-14 MM NBR	1
216	84 37 97		Seal sleeve (14)-16 MM NBR	1
216	84 37 98		Seal sleeve (16)-18 MM NBR	1
216	84 17 94		Seal sleeve (18)-20 MM NBR	1
217	678 58 12	(Ex)	Cable clip 10-(12) MM	1
217	678 58 14	(Ex)	Cable clip 12-(14) MM	1
217	678 58 16	(Ex)	Cable clip 14-(16) MM	1
217	678 58 18	(Ex)	Cable clip 16-(18) MM	1
217	678 58 20	(Ex)	Cable clip 18-(20) MM	1
223	83 02 01		Hex.socket hd screw M8X25-A4-80	3
224	703 05 00		Suction housing	1
225	83 80 00		Suction housing ins.	1
226	830 32 00		Helical rotor	1
227	85 05 68		Spiral pin	1
232	397 81 00	(Ex)	Gland screw Pr 37	1
234	82 17 61		Cutting screw TAPTITE-M6X12	1
235	83 43 58		Cable lug UL/CSA 1.04-2.62 MM2 M6	1
236	83 42 65		Terminal block 600V/20A UL	5
236	83 42 67		Terminal block 600V/20A UL	1
236	83 44 23		Closed-end splice 4.0-9.0 (AWG 8)	2
236	83 44 24		Closed-end splice 3-6 (AWG 12-10)	5
236	83 42 65		Terminal block 600V/20A UL	4
236	83 42 67		Terminal block 600V/20A UL	4
236	83 42 65		Terminal block 600V/20A UL	1
236	83 42 62		Closed-end splice 0.33-0.82 (AWG 22-18)	3
350	799 11 00		Cable entry kit	1

Pos. No	Part. No	Type	Denomination	Qty/Version
				175
800	80 33 20		O-ring kits 3068.180/250	1
900	601 89 54		Basic repair kit 3068.180	1
901	90 17 52		Oil ISO VG 32	*

Xylem |'zīləm|

- 1) The tissue in plants that brings water upward from the roots;
- 2) a leading global water technology company.

We're a global team unified in a common purpose: creating advanced technology solutions to the world's water challenges. Developing new technologies that will improve the way water is used, conserved, and re-used in the future is central to our work. Our products and services move, treat, analyze, monitor and return water to the environment, in public utility, industrial, residential and commercial building services settings. Xylem also provides a leading portfolio of smart metering, network technologies and advanced analytics solutions for water, electric and gas utilities. In more than 150 countries, we have strong, long-standing relationships with customers who know us for our powerful combination of leading product brands and applications expertise with a strong focus on developing comprehensive, sustainable solutions.

For more information on how Xylem can help you, go to www.xylem.com



Xylem Water Solutions Global
Services AB 556782-9253
361 80 Emmaboda
Sweden
Tel: +46-471-24 70 00
Fax: +46-471-24 74 01
<http://tpi.xylem.com>
[www.xylemwatersolutions.com/
contacts/](http://www.xylemwatersolutions.com/contacts/)

Visit our Web site for the latest version of this document and more information

The original instruction is in English. All non-English instructions are translations of the original instruction.

© 2012 Xylem Inc